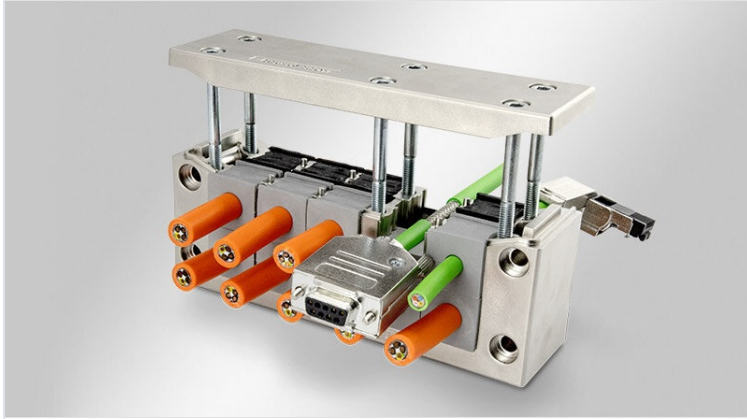


EMC-KEL-DS | Split EMC cable entry frames

for shielding cables with connectors / IP55



IP54

IP55

RIWA



RoHS compliant



Made in Germany

The EMC cable entry frame EMC-KEL-DS has been metallised (galvanise coated) to create a conductive surface.

The front cable grommet (KT) is used for strain relief and cable sealing on the cable jacket. The cable shield is contacted over 360° via the rear conductive grommet (EMC-KT).

The EMC-KEL-DS frames match exactly the cut-out dimensions for 24-pin standard industrial connectors. Either a cut-out of 36 mm or 46 mm in height can be chosen depending on the cables being routed.

The contact between the EMC-KEL-DS and the conductive housing wall is realised via the included conductive flat gasket.

It is also possible to integrate threaded bushings. Please ask us about your desired variant. The version with threaded bushings enables the cable entry frame to be screwed onto the housing from the inside out. This protects against vandalism and tampering with the housing from the outside.

Specifications

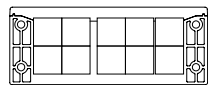
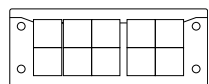
IP rating (EN 60529)	IP54, IP55
Material	Polyamide, highly conductive coating
Flame class	UL94-HB
Operating temperature	-40 C° to 140 C°
Mounting options	Screw type mounting

Advantages & benefits

- Both conducted and field-bound disturbances can be reliably diverted
- Strain relief and sealing are separated from the EMC contact
- Scratch-resistant surface
- Contacting the cable shield over 360°
- EMC grommets made entirely from conductive elastomer
- Very good dissipation values
- Very good shielding effect with regard to EMC tightness

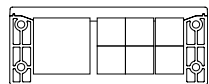
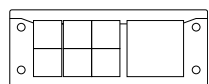
Product types & sizes

EMC-KEL-DS 24|10

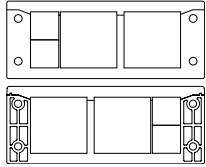


Part No.	99410	Height	40 mm
EAN	4251269322679	Mounting height	40 mm
Package quantity	1	Cut-out size	112 x 36 mm
For max. no. of cables	10	No. of screw holes	4
Max. cable diameter	17 mm	Diam. of screw holes	5,8 mm
Length	147 mm	Screw material	Stainless steel (V2A)
Width	58 mm	Suitable for grommets	10 x EMC-KT small 10 x KT small

EMC-KEL-DS 24|7



Part No.	99411	Height	40 mm
EAN	4251269322686	Mounting height	40 mm
Package quantity	1	Cut-out size	112 x 36 mm
For max. no. of cables	7	No. of screw holes	4
Max. cable diameter	35 mm	Diam. of screw holes	5,8 mm
Length	147 mm	Screw material	Stainless steel (V2A)
Width	58 mm	Suitable for grommets	6 x EMC-KT small 1 x EMC-KT large



Part No.	99412	Height	40 mm
EAN	4251269322693	Mounting height	40 mm
Package quantity	1	Cut-out size	112 × 36 mm
For max. no. of cables	4	No. of screw holes	4
Max. cable diameter	35 mm	Diam. of screw holes	5,8 mm
Length	147 mm	Screw material	Stainless steel (V2A)
Width	58 mm	Suitable for grommets	2 x EMC-KT small 2 x EMC-KT large

icotek[®]
smart cable management