

# Cover plugs

for cable entry frames & plates



RoHS  
compliant

The openings at the fastening points of the cable entry frames can be closed with the cover plugs.

There are two versions: One version to cover the openings when using threaded bushings, one to cover the screws. The cover plugs can be used with the products of the KEL series.

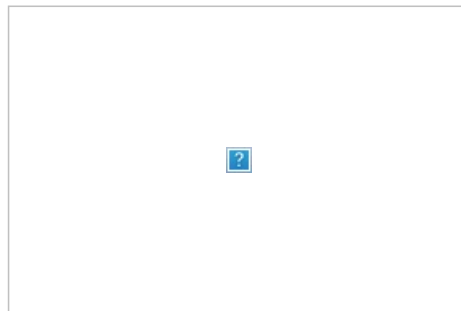
The cover plugs can also be used with the products of the KEL-DPZ series. They are available in black and grey.



When fastening from the rear using a threaded bushing, an opening is created at the front at the fastening points. These can be closed with the **cover plugs A** in black (Order No. 99142).



When fastening from the front by means of screws, the openings at the screw heads can be closed with the **cover plugs B** in black (order no. 99200) or **cover plugs C** in grey (order no. 99201). The cover plugs can only be used for M5 DIN 912 screws.



When fastening from the front by means of screws, the openings at the screw heads can be closed with the **cover plugs B** in black (order no. 99200) or **cover plugs C** in grey (order no. 99201). The cover plugs can only be used for M5 DIN 912 screws.

## Specifications

<b>Material</b>	Polyethylene
<b>Operating temperature</b>	0 C° to 70 C°
<b>Properties</b>	higher chemical resistance

## Advantages & benefits

- Simple closing of the openings at the fastening points of the KEL / KEL-DPZ
- Smooth finish on the frame surface
- No dirt recesses

## Product types & sizes

**Cover plug A**



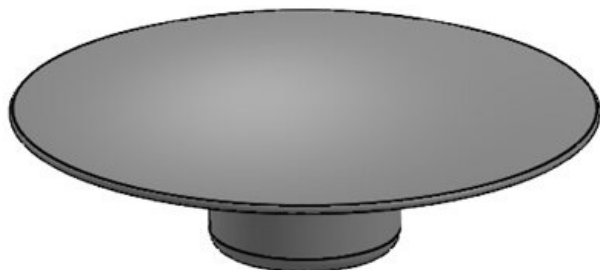
Part No. **99142**  
EAN  
Package quantity **100**  
Height **4 mm**  
Colour **black**  
Suitable for cable entry systems: **KEL-ER / KEL-U / KEL / KEL-QUICK / KEL 183 / KEL-FL**

**Cover plug B**



Part No. **99200**  
EAN **4251269324**  
**208**  
Package quantity **40**  
Height **3 mm**  
Colour **black**  
Suitable for cable entry systems: **KEL-ER / KEL-U / KEL / KEL-QUICK / KEL 183 / KEL-FL / KEL-DPZ**

**Cover plug C**



Part No. **99201**  
EAN **4251269324**  
**215**  
Package quantity **40**  
Height **3 mm**  
Colour **grey (similar RAL 7035)**  
Suitable for cable entry systems: **KEL-DPZ**

